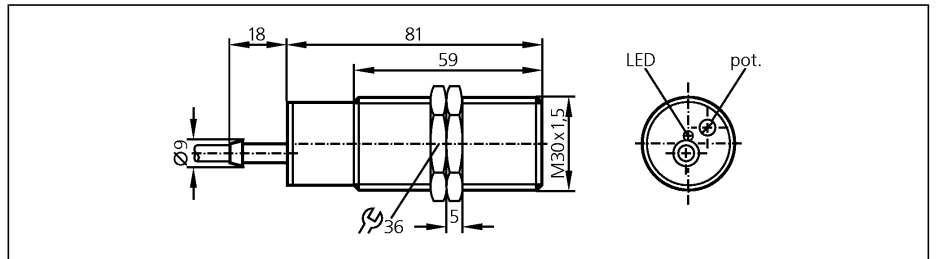


Capacitive sensors

**KI5210**

KI-3015-FNKG/NI/US  
 Capacitive sensor  
 Plastic thread M30 x 1.5  
 Cable with connector

Sensing range 15mm [nf]  
 adjustable 3...15 mm  
 non-flush mountable



Electrical design	
Output	
Operating voltage	[V]
Current rating (continuous)	[mA]
Current rating (peak)	[mA]
Short-circuit protection	
Reverse polarity protection	
Overload protection	
Voltage drop	[V]
Current consumption	[mA]
Real sensing range	[mm]
Operating distance	[mm]
Switch-point drift	[% of Sr]
Hysteresis	[% of Sr]
Switching frequency	[Hz]
Correction factors	
Operating temperature	[°C]
Protection	
Housing material	
Function display	
Switching status	LED
Connection	
Accessories (included)	

DC NPN	
normally open / closed programmable	
Operating voltage	10...36 DC
Current rating (continuous)	250
Current rating (peak)	250
Short-circuit protection	Yes (non-latching)
Reverse polarity protection	yes
Overload protection	yes
Voltage drop	< 2.5
Current consumption	< 15
Real sensing range	15 ± 10 %
Operating distance	0...12.1
Switch-point drift	-15...15
Hysteresis	1...15
Switching frequency	40
Correction factors	water = 1 / glass approx. 0.4 / ceramics approx. 0.2 / PVC approx. 0.2
Operating temperature	-25...80
Protection	IP 65, II
Housing material	PBT
Function display	
Switching status	red
Connection	PUR cable / 0,1 m; M12 connector
Accessories (included)	2 lock nuts, screwdriver

**Wiring**

